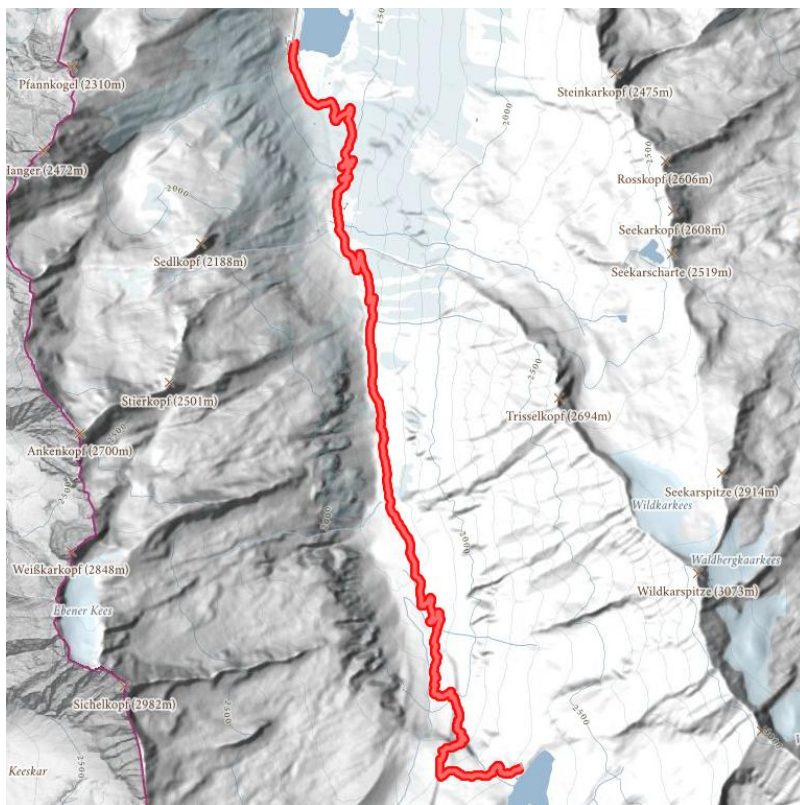


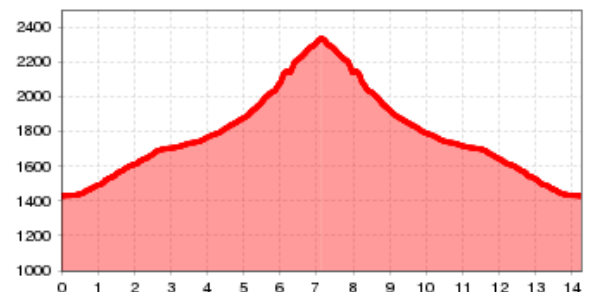
# Zittauer Hütte (2.330 m)

5 - 6 hours nice walk to Zittauer Hütte. The Zittauer Hütte is located directly on the lake "Wildgerlos" and is for fit hikers an ideal starting point for various hut tours (Richter Hütte, Krimmler Tauernhaus, etc).

<b>Totale wandeltijd</b>	3 h	<b>lengte</b>	7 km	<b>moeilijkheid</b>	Gemiddeld
<b>Hoogtewinst bergop</b>	910 hm	<b>Het hoogste punt</b>	2329 m		
<b>startpunt:</b>	Alpengasthof Finkau				
<b>Eindpunt:</b>	Zittauer Hütte (2.329 m)				



Hoogteprofiel



## Beschrijving

From the car park of the Alpengasthof Finkau at the end of the Durlassboden lake, the path leads down a shady forest path no. 540 past the natural monument, Leitenkammerklamm, up to the rustic Trisslalm. The path continues straight on through open terrain, along the stream, through the wonderfully romantic Wildgerlos valley. In the westerly valley of the Hohe Tauern National Park, large rock formations, which can be climbed by young and old, provide lots of variety on the approx. 2 hour hike through to the large waterfall at the end of the valley. A head for heights is an absolute necessity for the steep ascent on path no. 540 to Zittauer Hütte. Crossing over stone steps and secured with a rope on the rock face, you can climb up past the moraine to the waterfall and then finally onto the Zittauer Hütte. The lodge, which has been awarded the environmental standard, was built in 1900. A magnificent landscape awaits you at the top with the Wildgerlossee and the choppy glacier landscape of the Wildgerloskees. Then it's back to the Alpengasthof Finkau along the same path. It is also possible to just hike through the wonderful Wildgerlos valley and turn around at the turnoff to Zittauer Hütte.

## Hutten/Alpenweiden

- [Trisslalm \(1.583 m\)](#) gesloten
- [Zittauer Hütte \(2.330 m\)](#) gesloten

## Downloads

[GPX BESTAND](#)

[INTERACTIEVE KAART](#)

