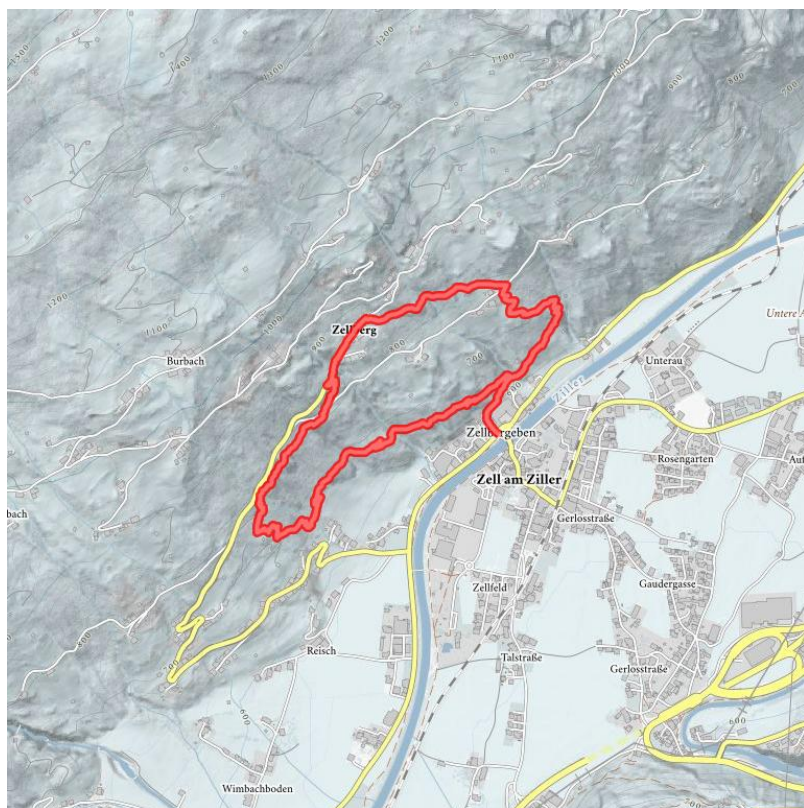
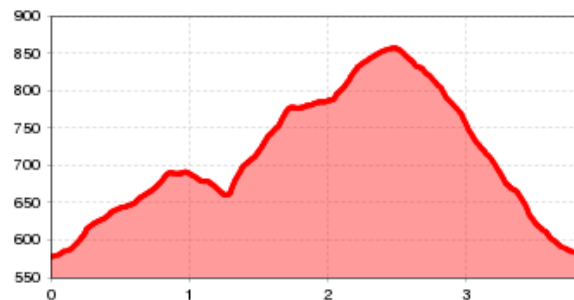


Rund hiking trip: Zellberg

Totale wandeltijd	1 h	lengte	3 km	moeilijkheid	Gemiddeld
Hoogtewinst bergop	300 hm	Hoogte bergafwaarts	300 hm	Het hoogste punt	860 m
Soort route:	Rondvaart				



Hoogteprofiel



Beschrijving

Starting point: Zillerbrücke (bridge) - Zellbergeben

From the starting point Zillerbrücke (bridge) you reach left of the car dealership Huber the start position. Follow the signposting to the path branch no. 4 and 5. After 300 m the path branches off toward Zur Schönsten Aussicht (no. 5). After crossing the road the path leads through a forest to the Gasthof Schulhaus and the Herz-Jesu chapel. From there a short distance along the road further through a dense forest and via the Eugen promenade you reach the Josef chapel and the starting point in the valley.

Downloads

[GPX BESTAND](#)

[INTERACTIEVE KAART](#)







