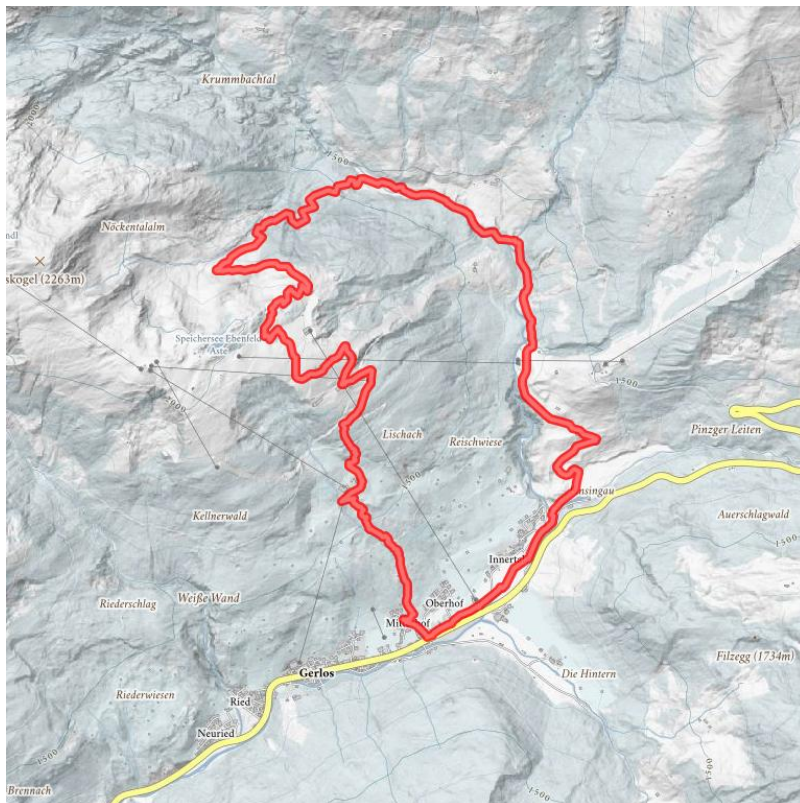


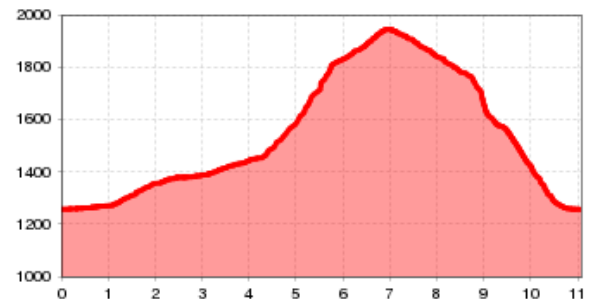
Hut Tour Gerlos

Beautiful Tour around the Huts in Gerlos

Totale wandeltijd	3:30 h	lengte	11 km	moeilijkheid	Gemiddeld
Hoogtewinst bergop	630 hm	Hoogte bergafwaarts	630 hm	Het hoogste punt	1900 m
startpunt:	Parkingstation Isskogelbahn Gerlos or topstation cable car Isskogelbahn				
Eindpunt:	Parkingstation Isskogelbahn Gerlos				



Hoogteprofiel



Beschrijving

Start of the hike is the parking at the Isskogelbahn in Gerlos.

From the Gerlosbach, follow the valley to the ascending trail past the Almstüberl (summer closed) to the Prölleralm (a rustic mountain hut with a wonderful view of the Schönachkees).

Continue along the brook, we reach the "Krummbachrast" - a hut with its own cheese factory and a big terrace. After a short refreshment we walk past to the bridge, where the trail climbs through a short forest section to the Nöckeltalalm.

From the Arena Center (top station Isskogelbahn) and Latschenalm we follow a slightly ascending path of goods.

From here ...

A) ... take the gondola back to the starting point - parkingstation at the Isskogelbahn.

B) ... hike from the mountain station along the Rössl Alm (summer closed) through a short forest section to a turn off from which you either continue on the 3 km long „Wiesenweg“ towards to Innertal - or the shorter but more challenging path is from The forest back to Gerlos.

Aankomst

Parkeren

Parking cable car Isskogelbahn

Hutten/Alpenweiden

[Krummbachrast \(1.480 m\)](#) [Winter closed](#) gesloten

[Arena Center \(1.900 m\)](#) gesloten

[Latschenalm \(1.950 m\)](#) gesloten

[Rössl Alm \(1.600 m\)](#) gesloten

Downloads

[GPX BESTAND](#)

[INTERACTIEVE KAART](#)

