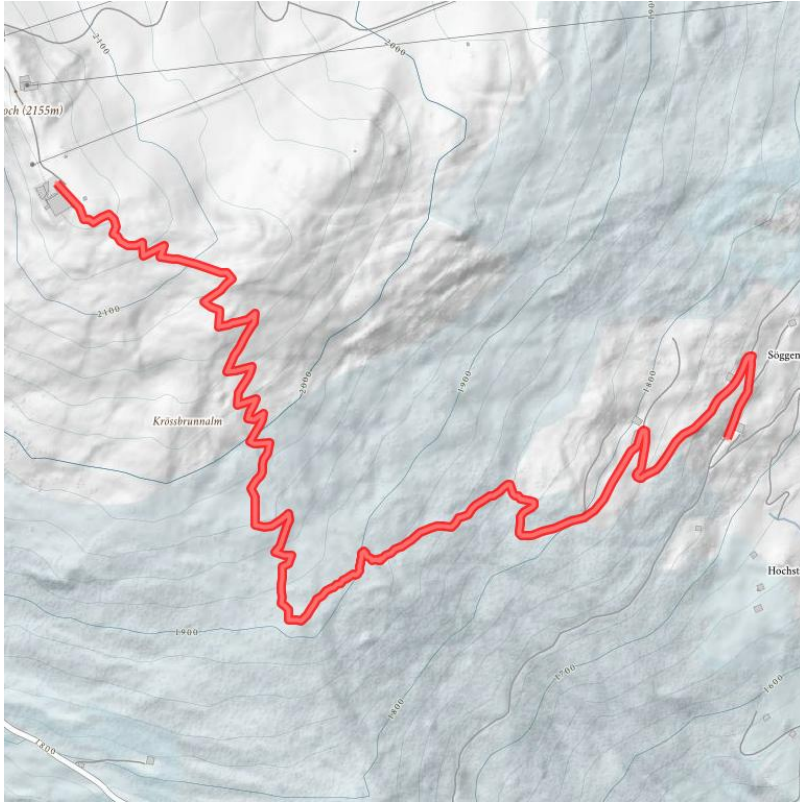
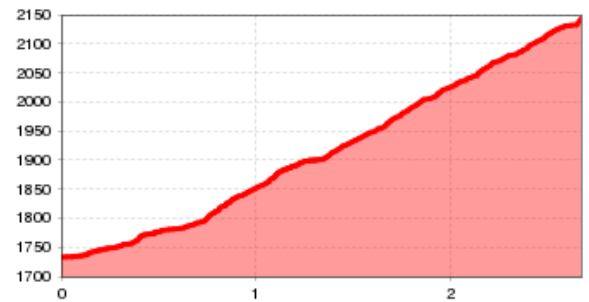


# Hiking tour: Söggenaste - Kristalhütte (2,147 m)

<b>Totale wandeltijd</b>	1 h	<b>lengte</b>	2 km	<b>moeilijkheid</b>	Gemiddeld
<b>Hoogtewinst bergop</b>	425 hm	<b>Het hoogste punt</b>	2147 m		



Hoogteprofiel



## Beschrijving

**Starting point: Söggenaste, 1,723 m (Zillertaler Höhenstraße - High Road, toll road)**

A short piece on the right to the East of the Söggenaste you turn left at the road fork and follow the marked way over pastures and through a forest to the next crossing. There you turn left and follow the precipitously rising way to the Kristalhütte. From here - above the timber line - you enjoy a marvellous panoramic view on the surrounding mountains. After a 40 minutes ascent you reach the wonderful situated Kristalhütte. The descent leads over the same way back to the starting point.

## Hutten/Alpenweiden

[crystal gourmet-hut](#) gesloten

## Downloads

[GPX BESTAND](#)

[INTERACTIEVE KAART](#)

