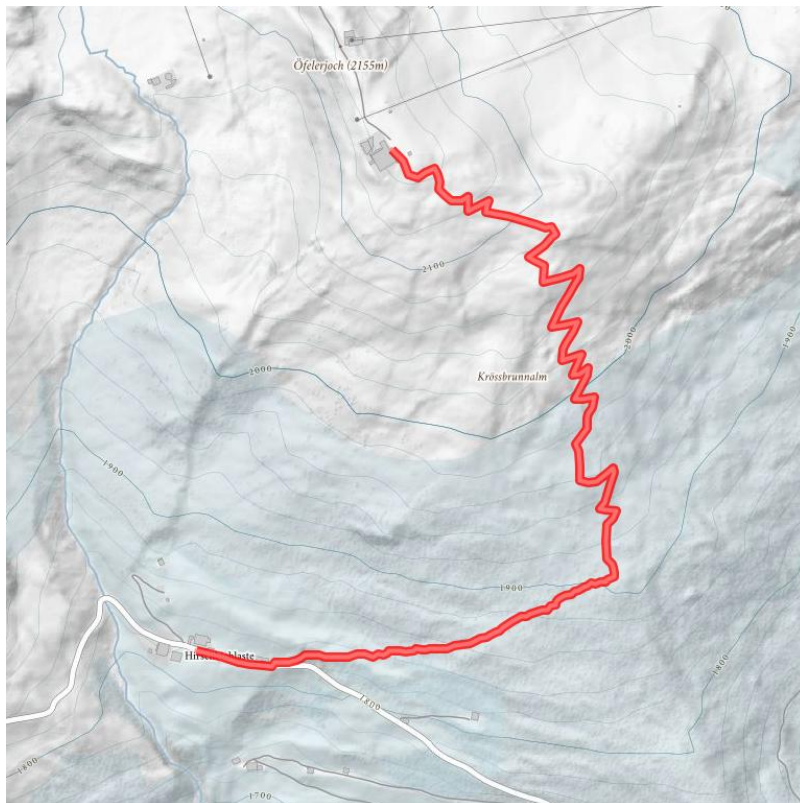


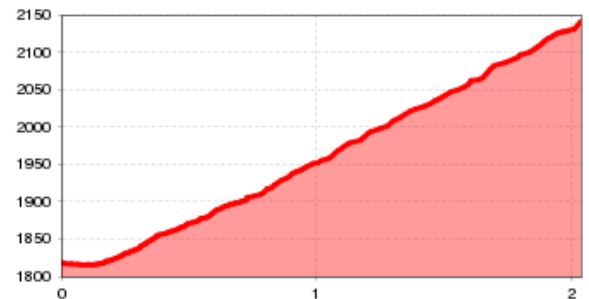
Hiking tour: Hirschbichlalm - Kristallhütte (2,147 m)

Mountain hike in the Zillertal alps with good places to stop for a break.

Totale wandeltijd	2 h	lengte	2 km	moeilijkheid	Gemiddeld
Hoogtewinst bergop	325 hm	Het hoogste punt	2147 m		
startpunt:	Hirschbichlalm				
Eindpunt:	Kristallhütte (2.147 m)				



Hoogteprofiel



Beschrijving

The starting point for this hiking tour is on the Zillertaler Höhenstraße and is easy to get to with the hiking bus or in your car. The marked hiking trail no. 14 branches off in an easterly direction uphill, shortly after Hirschbichlalm, at a spring. First walk for approximately 20 minutes over a green, flat mountain pasture and then make your way through a wonderful and gloriously aromatic pine forest. Turn left at the fork in the road and continue to follow hiking trail no.14, which now rises steeply. As soon as you have crossed the tree line you will be rewarded with a fantastic view of the surrounding mountain landscape. Once you have reached the idyllically located Kristallhütte (open Thursday till Sunday) you can relax for a bit and refresh yourself with a hearty snack for the descent on the same path.

Hutten/Alpenweiden

- [alp guest-house Hirschbichlalm](#) gesloten
- [crystal gourmet-hut](#) gesloten

Downloads

[GPX BESTAND](#)

[INTERACTIEVE KAART](#)

