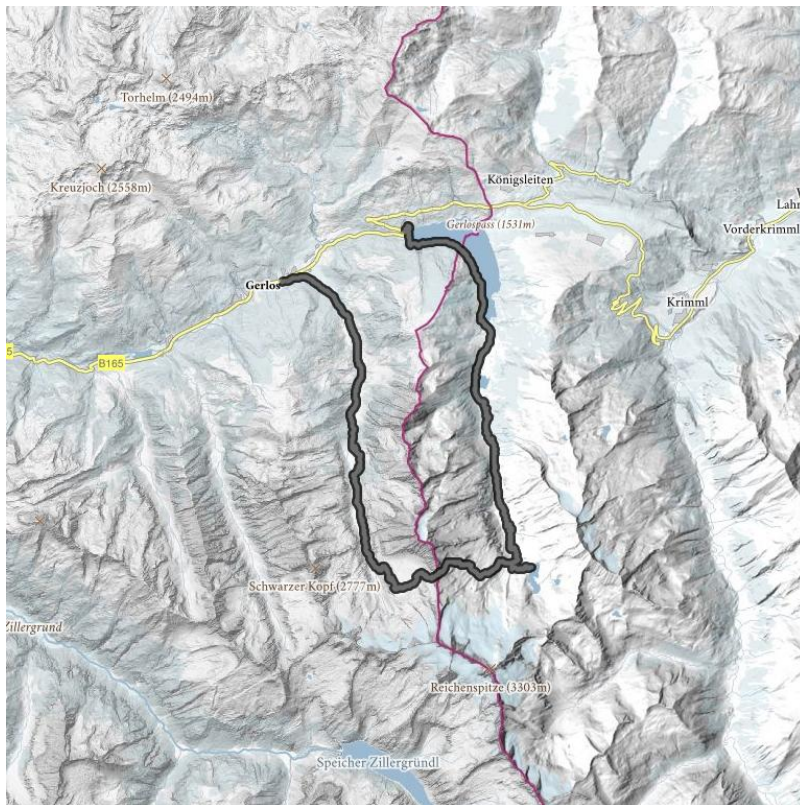


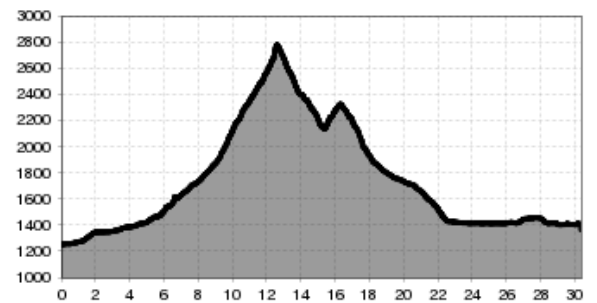
Gerlos-Schönachtal-Keeskarschorte-Zittauer Hütte-Finkau

This is a superb mountain tour starting from Gerlos, but it requires a lot of stamina, good hiking gear and a level head for heights – good Alpine Club route.

Totale wandeltijd	9:30 h	lengte	30 km	moeilijkheid	Moeilijk
Hoogtewinst bergop	1500 hm	Hoogte bergafwaarts	1500 hm	Het hoogste punt	2329 m
startpunt:	Eingang Schönachtal				
Eindpunt:	Gerlos (1.250 m)				
zegel van goedkeuring:	Tiroler Wander Medalie				



Hoogteprofiel



Beschrijving

If you wish, you can do this tour in stages with an overnight stop at the Zittauer Hütte. Gerlos to the Schönach glacier approx. 3 hrs., from there on to the Keeskarschorte 4 ½ hrs. The refuge warden (a mountain guide) at the Zittauer Hütte will inform you about rock climbs and glacier tours in the region. Make your way to the right from the Oberwirt, across the Gerlosbach bridge past the Jörgleralm (1.300 m) to the Stinkmoosalm. Now continue slightly upwards via the Lackenalm (open, 1.405m) and the Pasteinalm (1.692m) following the good path to the Keeskar, zigzagging up the east side of the valley to the Keeskarschorte (col at 2.778 m). Extremely impressive close-up view of the glacier with the rock and ice-capped mountains in the Schönachtal and Wildgerlostal. Wind your way down eastwards into the Wildgerlostal on a well-marked path until you reach the tongue of the Wildgerloskees glacier. From here you can either...

a)...cross eastwards below the glacier tongue (3/4 hr.) and then walk up gently to the Zittauer Hütte at the Wildgerlossee (lake) and stop for a rest here while admiring the view onto the glacier. The refuge lies at a height of 2.329 m and enjoys one of the most beautiful setting in the Tyrol; or

b)... take the direct route down in zigzags along the left edge of the glacier moraine until you reach the valley floor. This so-called <<Grund<< is shaped like a horseshoe and flanked in on all sides by rock walls. Here the route joins up with the path leading down from the Zittauer Hütte on the other side of the valley. Now make your way to the right of the stream along the fairly level valley floor and out through the Wildgerlostal to the Durlassboden reservoir, then past the Drissalm (1.583 m) to the Finkaualm mountain in. From here you can continue on the road to the Gerlos Pass and take the mail bus back to Gerlos or, from Finkau, carry on along the west edge of the reservoir to the Bärschlagalm, then follow the new path to the dam and back to the Gerlos road. From the Zittauer Hütte to here it take approx. 3 hrs. From the dam it is an hour walk to Gerlos or return by mail bus (bus stop).

Hutten/Alpenweiden

Jörgleralm (1.300 m)	gesloten
Lackenalm (1.405 m)	gesloten
Bärschlagalm (1.460 m)	gesloten
Seestüberl (1.410 m)	gesloten
Zittauer Hütte (2.330 m)	gesloten

Downloads

[GPX BESTAND](#)

[INTERACTIEVE KAART](#)

