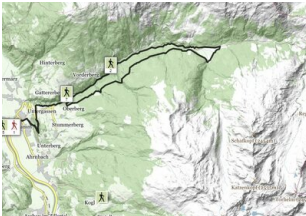


Stumm - Märzengrundweg - Gmünder Alm - Stumm (Trail No. 39)

Wandeltijd	06:30 h
Lengte	18.9 km
Moeilijkheid	Middle
Hoogtewinst bergop	800 hm
Hoogte bergafwaarts	800 hm
Het hoogste punt	1400 m
Route Start	community hall Stumm (Gemeindehaus), Dorfstraße 29, 6275 Stumm
Route End	community hall Stumm (Gemeindehaus), Dorfstraße 29, 6275 Stumm



Description

Set off from the Gemeindeamt (village hall) in Stumm and head past the school to the edge of the forest. Turn right at the junction and onto the hiking trail - turn right and head uphill after approx. 400 m – and follow the steeply climbing trail through the forest (Way of the Cross) until it enters the road. Where it joins the road turn left and walk to the Märzengrund car park area. The trail heads slightly uphill from there to the Märzengrund. Continue walking straight on when you reach the junction Tannenalm-Märzengrund. Follow the hiking trail along the Märzenbach stream until it joins a forest road. Continue walking along the forest road for around 15 minutes. Cross the Märzenbach River bridge and continue along the banks of the Märzenbach River until crossing the Märzenbach River anew. Starting at a steep climb, the wide hiking trail then becomes a pleasant walk to the Gmünder Alm. During the return journey, stay on the forest road until you come to the Tannenalm/Stumm junction. Then hike downhill and to the right along the forest path to reach Stumm.

stop off possibilities: Gasthof Tannenalm