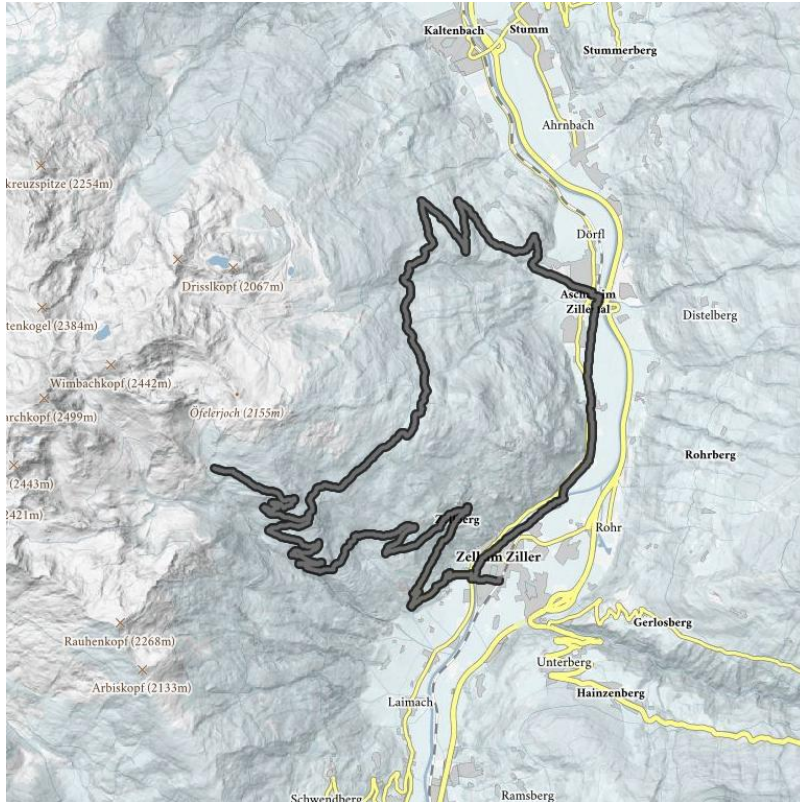


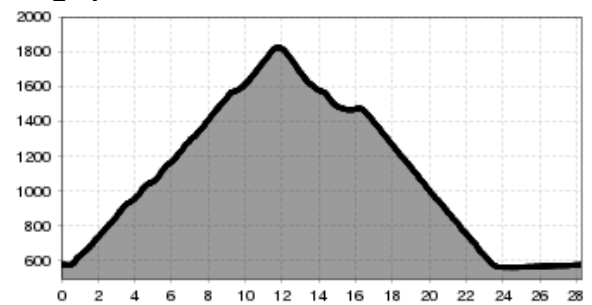
# 401 - Zillertaler Höhenstraße

Demanding tour over the Zillertaler Höhenstraße with breathtaking views over the fantastic Zillertaler mountain world.

<b>lengte</b>	28 km	<b>moeilijkheid</b>	Moeilijk	<b>Rondvaart</b>	Nee
<b>Hoogtewinst bergop</b>	1275 hm	<b>Hoogte bergafwaarts</b>	1275 hm	<b>Het hoogste punt</b>	1830 m



Hoogteprofiel



## Beschrijving

Starting from the railway station in Zell, follow the steep mountain road up towards the "Höhenstrasse" high-altitude road to the Hirschbichlalm mountain restaurant where you can enjoy the glorious, scenic vista. After cycling for around half an hour, your efforts will be rewarded at the Herz-Jesu chapel where you can take in the breathtaking view of the "Gerlossteinwand" rock climbing wall. A little further on, beside the Breier farm, there follows a short flat section so you can give your legs a rest. After that comes the steepest section of the tour, an "hors categorie" climb (as in the Tour de France) up to the highest point on the route followed by the well-earned descent.

## Downloads

[GPX BESTAND](#)

[INTERACTIEVE KAART](#)





