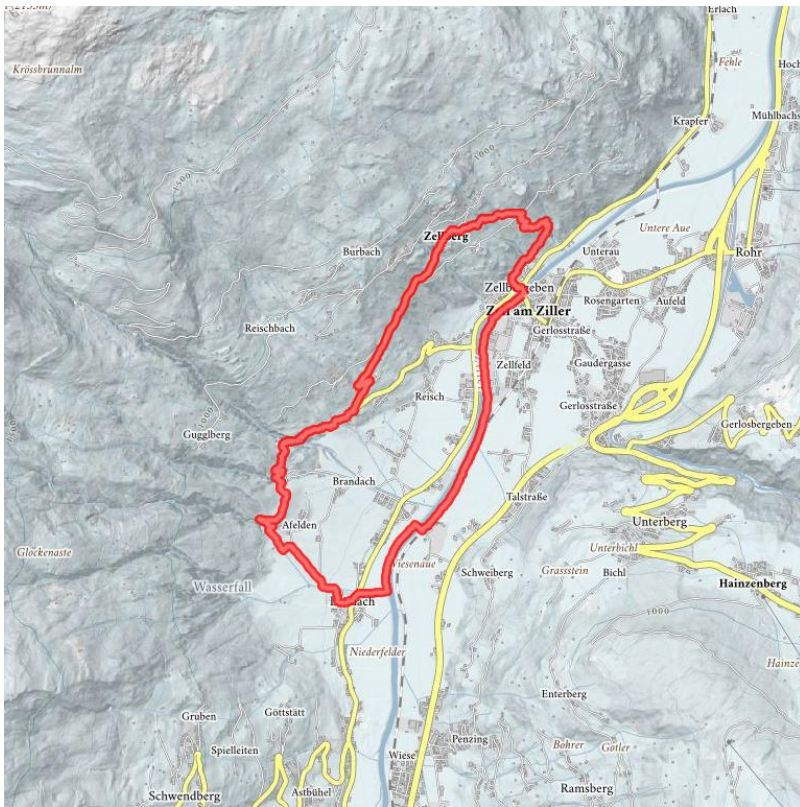
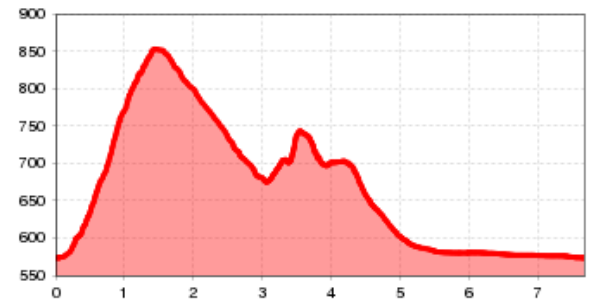


Round hiking trip: Zellberg (with Talbach)

Totale wandeltijd	3 h	lengte	8 km	moeilijkheid	Gemiddeld
Hoogtewinst bergop	390 hm	Hoogte bergafwaarts	390 hm	Het hoogste punt	860 m
Soort route:	Rondvaart				



Hoogteprofiel



Beschrijving

Starting point: Zillerbrücke (bridge) - Zellbergeben

From the car dealership up to Schönsten Aussicht (Klöpfelstaudach, way no. 5) then on the way no. 6 to the Gasthof Schulhaus and to the Herz-Jesu chapel. Now you walk along the Zellberg road up to the bend "branch Talbach" (signposting). The sting is a short section in the area of the Talbach waterfall where you overbear this scenic section over steep stairs. Shortly before Hippach the trail leads back to the valley. From the district Laimach up to the "Laimachsteg" (bridge) where the trail leads along the Ziller promenade back to the starting point.

Hutten/Alpenweiden

[guest house Schulhaus](#) open

[snackbar Talbach \(650 m\)](#) gesloten

Downloads

[GPX BESTAND](#)

[INTERACTIEVE KAART](#)

