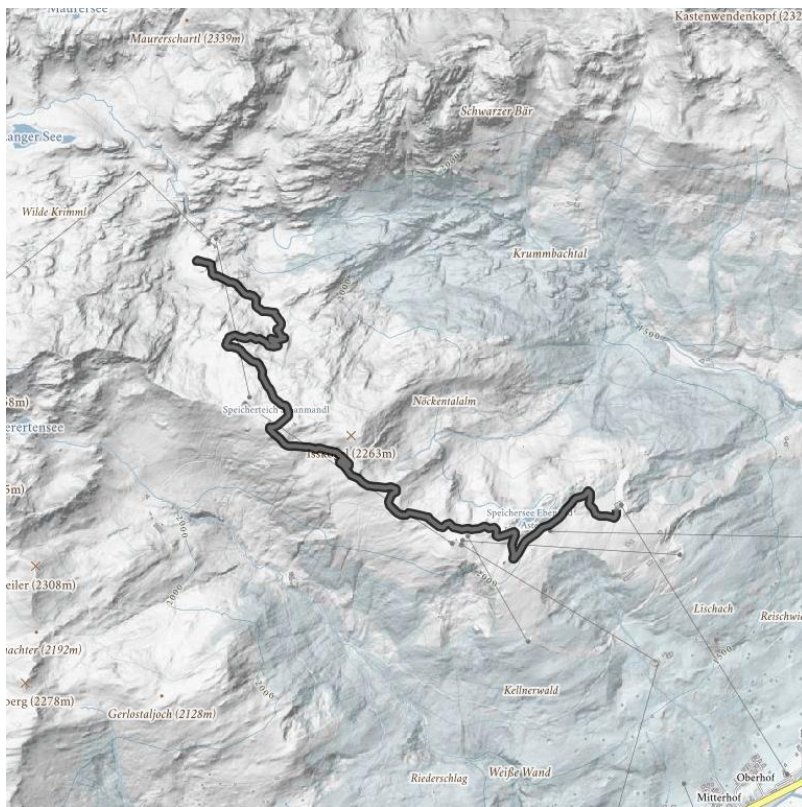


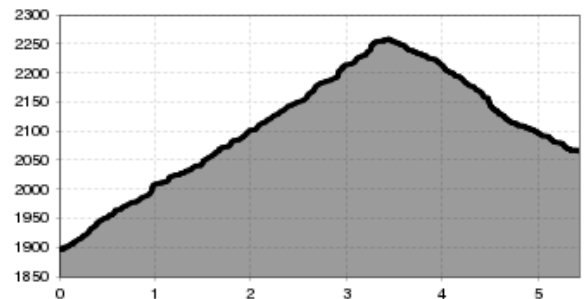
444 - Wilde Krimml

This tour runs above the forest line and offers a fantastic view of the highest peaks in our region.

lengte	5.4 km	moeilijkheid	Moeilijk	Rondvaart	Nee
Hoogtewinst bergop	363 hm	Hoogte bergafwaarts	1405 hm	Het hoogste punt	2260 m
startpunt:	Top station Isskogelbahn				
Eindpunt:	Musicpavillon Gerlos				



Hoogteprofiel



Beschrijving

We start at the mountain station of the Isskogelbahn at 1,900m. Past the Latschenalm and at the crossroads keep right to the foot of the Isskogel. Continue along a goods path (underground gravel) to the Stuamandspeichersee, from here you go down to the wild Krimmlalm - the end of the mountain bike route. Return to the mountain station of the Isskogelbahn connection route (No. 440/443) or via the Innerertensalmen and the Brennachweg No. 440 to Gerlos.

Hutten/Alpenweiden

[Latschenalm \(1.950 m\)](#) open

[Rössl Alm \(1.600 m\)](#) gesloten

Downloads

[GPX BESTAND](#)

[INTERACTIEVE KAART](#)



