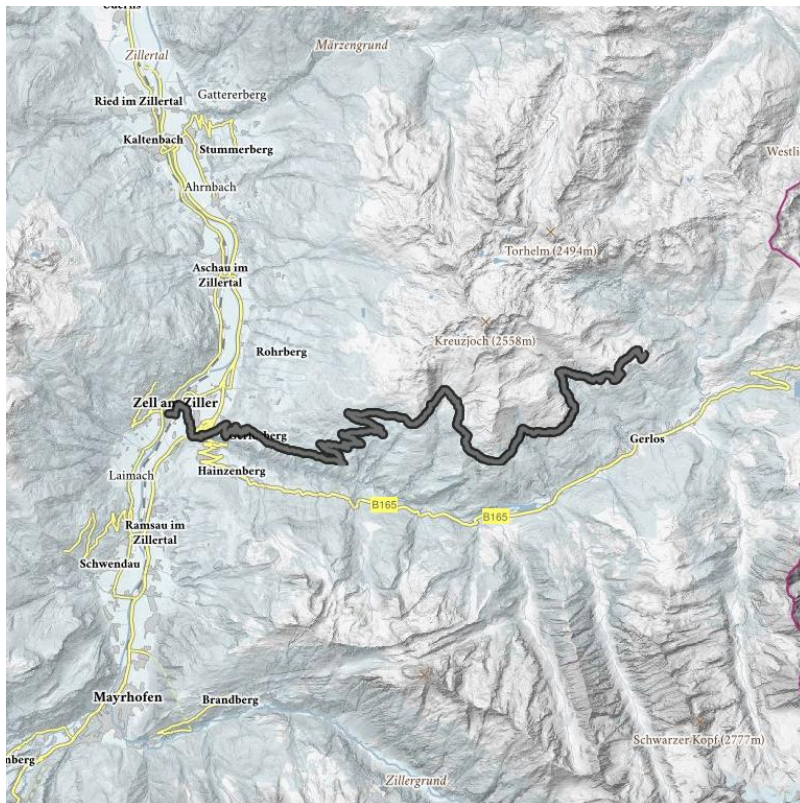


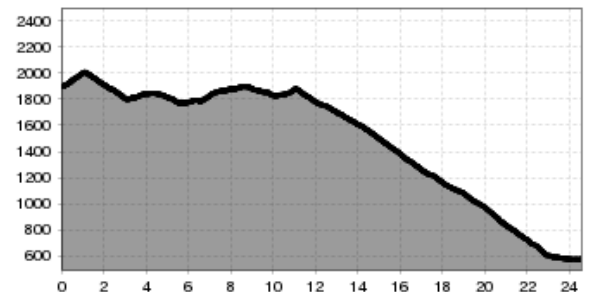
443 - Arena Panorama Tour 2

From the Isskogel mountain station to Zell am Ziller, this tour offers pure biking pleasure!

lengte	24 km	moeilijkheid	Moeilijk	Rondvaart	Nee
Hoogtewinst bergop	300 hm	Hoogte bergafwaarts	1610 hm	Het hoogste punt	2010 m
startpunt:	Isskogelbahn Bergstation				
Eindpunt:	Freizeitpark Zell am Ziller				



Hoogteprofiel



Beschrijving

The tour starts at the mountain station of the Isskogelbahn at 1,900m. The tour leads through extensive alpine pastures above the tree line. Follow the panorama path for more than 10 kilometers at an altitude of almost 2,000 meters to the Kreuzwiesenalm. From here a long descent leads over the Gerlosberg to Zell am Ziller.

Route character: gravel, asphalt.

Caution: exit Gerlosberg (car traffic)

Hutten/Alpenweiden

[Latschenalm \(1.950 m\)](#) open

[delicacy-hut Kreuzwiesenalm 1.880m](#) open

[guest house Adamerhof](#) open

[alp guest-house Enzianhof](#) open

Downloads

[GPX BESTAND](#)

[INTERACTIEVE KAART](#)

