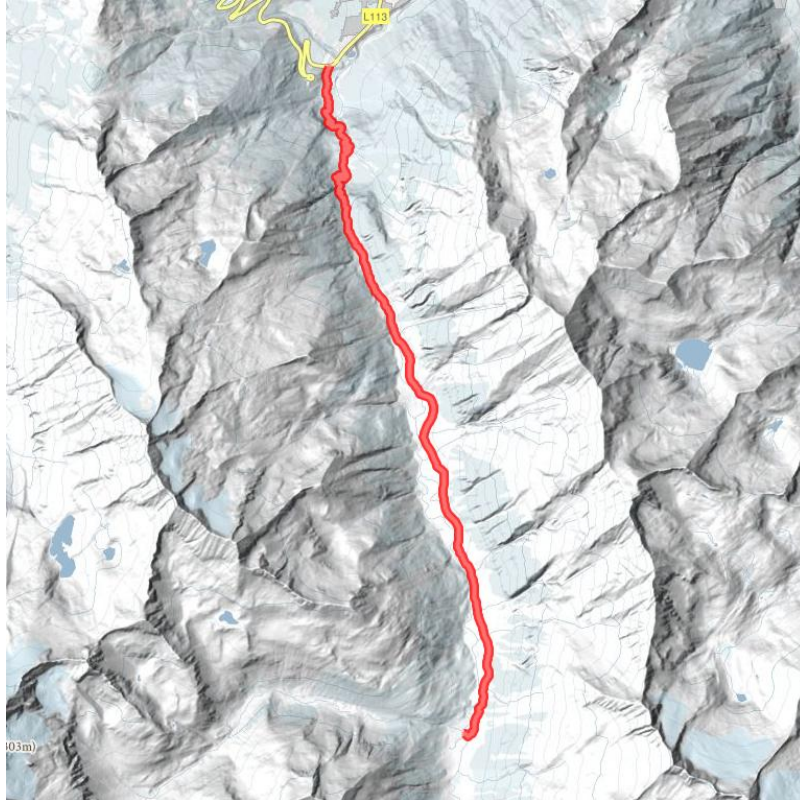


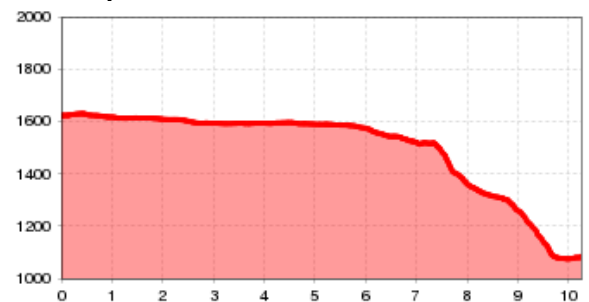
Women on a Mission Tour - day 4

We did it!

distance	12 km	difficulty	average
altitude meters uphill	20 m	highest point	1630 m



Altitude profile



Description

Well fortified from the hearty breakfast, we continue towards the Krimml Waterfalls, one of the most popular destinations in Europe. The Krimmler Achental is a natural gem and belongs to the Hohe Tauern National Park. KEEP YOUR EYES OPEN: we might encounter some marmots or eagles on the hike. After two hours of hiking along the gentle alpine pastures and the Krimmler Ache we reach the impressive Krimml Waterfalls and after another hour the destination for the last stage of the Weibsbildertour, the village of Krimml. With a drop of 380 metres over three levels, the Krimml Waterfalls are the highest in Europe and a first-rate natural wonder. This highlight and natural remedy is the perfect conclusion to the demanding Weibsbildertour, which is guaranteed to leave us with unforgettable impressions.

hut/alpine hut

[Krimmler Tauernhaus \(1.631 m\)](#) closed

downloads

[GPX FILE](#)

[INTERACTIVE MAP](#)

