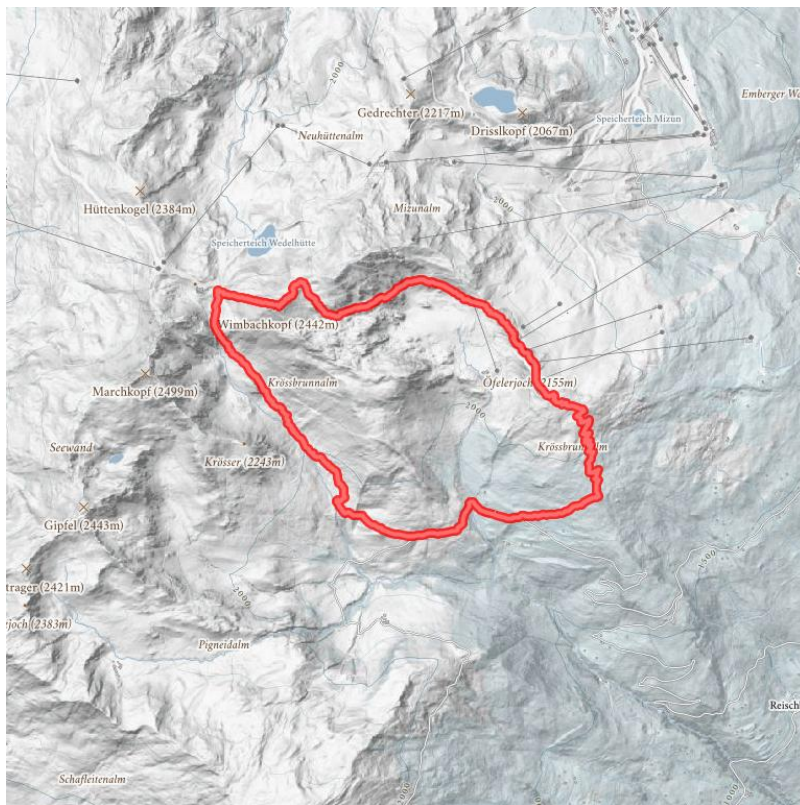


# Round hiking trip via Stoanmandlweg: Hirschbichlalm - Wedelhütte - Wimbachkopf - Kristallhütte

Varied hiking tour in the middle of the magnificent Zillertal mountain landscape.

<b>total walking time</b>	5 h	<b>distance</b>	7 km	<b>difficulty</b>	average
<b>altitude meters uphill</b>	625 m	<b>altitude meters downhill</b>	625 m	<b>highest point</b>	2442 m
<b>route typ:</b> circuit					



Altitude profile



## Description

The starting point for this 5 hour tour is the Hirschbichlalm, which is on the Zillertaler Höhenstraße and is easy to get to with the hiking bus or in your car using the toll road. Shortly after the mountain lodges, the marked hiking tour no. 35 branches off uphill in a westerly direction. Heading over the broad, lush, green mountain pastures of Krössbrunnalm, you will reach the flat hiking trail after approximately 10 minutes and then reach a fork in the road. Turn right here, but do not cross the stream! On this varied hiking trail no. 35 a, you will walk for approximately 1.5 hours through the valley basin, until the path branches off to the right in front of the Wedelhütte lodge on "Stoanmandlweg". Treat yourself to a break at the Wedelhütte (open from Thursday till Sunday) lodge and indulge in the culinary delights on offer in the gourmet kitchen! You will then continue to head up the somewhat more steeply ascending "Stoanmandlweg" until you reach the peak of Wimbachkopf. After you have let the breathtaking view work its magic, walk up the opposite side – remaining on the "Stoanmandlweg" – to the Kristallhütte (open from Thursday till Sunday). From there, hike through the wonderfully aromatic pine forests for approximately 40 minutes heading back to Hirschbichlalm.

## hut/alpine hut

- [alp guest-house Hirschbichlalm](#) open
- [alp guest-house Zellberg Stüberl](#) open
- [Wedelhütte](#) closed
- [crystal gourmet-hut](#) closed

## downloads

[GPX FILE](#)

[INTERACTIVE MAP](#)

