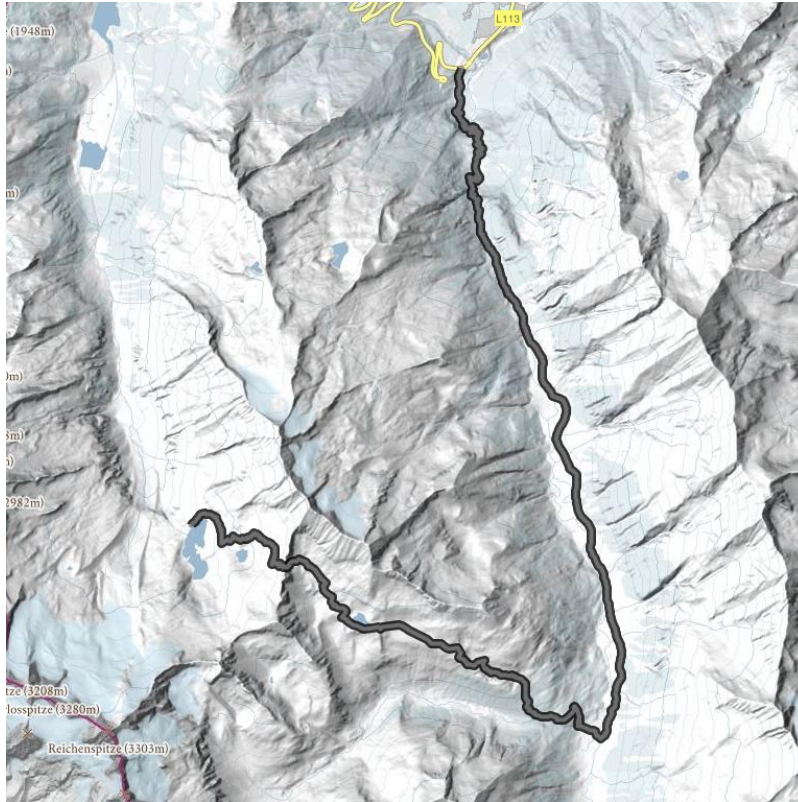


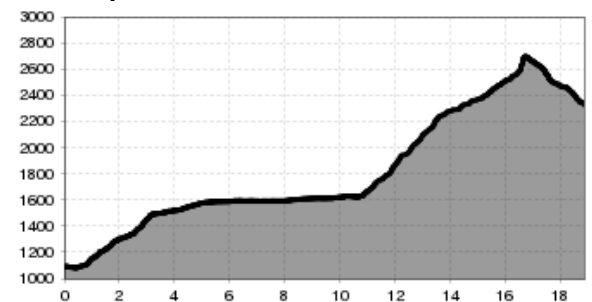
# Men on a mission tour - day 1

Breathtaking panoramic view!

<b>distance</b>	18.5 km	<b>difficulty</b>	difficult
<b>altitude meters uphill</b>	1648 m	<b>highest point</b>	2725 m



Altitude profile



## Description

We start our tour at the southern outskirts of Krimml. First, the hiking trail leads us along the Krimml Waterfalls viewing path to the top waterfall. The Krimmler Achental, one of the most beautiful high valleys in the Hohe Tauern National Park starts here. In the middle of this valley lies the Krimmler Tauernhaus. After a well-deserved rest, the hike (trail no. 511) takes us up into the Rainbachtal valley. Shortly after the Schlagegg, the trail descends to the right and then winds its way up to the Rainbachsee (2,404 m) and left along the lake on the secured trail to the Rainbachscharte (2,724 m). From here a path leads us down past the upper Wildgerlossee, further in hairpin bends to the lower Wildgerlossee and along its shore to the Zittauer Hütte. The idyllic location of the hut on the lake at the foot of the Reichenspitzgruppe is unique. We will also spend the night here at 2,329 m for the first time.

## hut/alpine hut

[Krimmler Tauernhaus \(1.631 m\)](#) closed

[Zittauer Hütte \(2.330 m\)](#) closed

## downloads

[GPX FILE](#)

[INTERACTIVE MAP](#)

