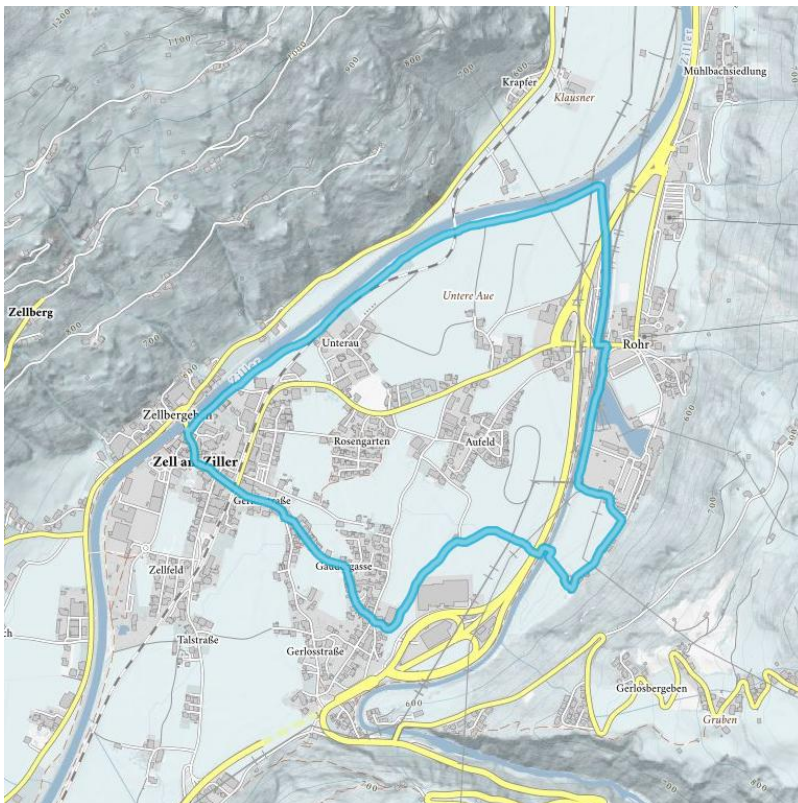


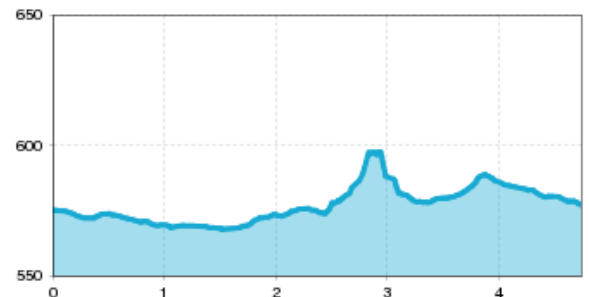
Little round trip Zell am Ziller

A circular walking tour of 1 hour along the Border Rivers of Zell am Ziller. Also suitable for families with pushchairs. Winter hiking shoes are recommended.

total walking time	1 h	distance	4 km		
altitude meters uphill	50 m	altitude meters downhill	50 m	highest point	590 m
route typ:	family tour				



Altitude profile



Description

Starting from the town square, walk up to just before the bridge, then to the right along the Zillerpromenade. Walk along the Ziller river until you reach the Gerlosbach river. After a few minutes, you cross the bridge and follow the riverside path to the Gasthof Waldrast. Then through the underpass of the Zillertal road through the fields to the Gauder chapel. From there through the Gaudergasse/Gerlosstraße back to the starting point.

downloads

[GPX FILE](#)

[INTERACTIVE MAP](#)

