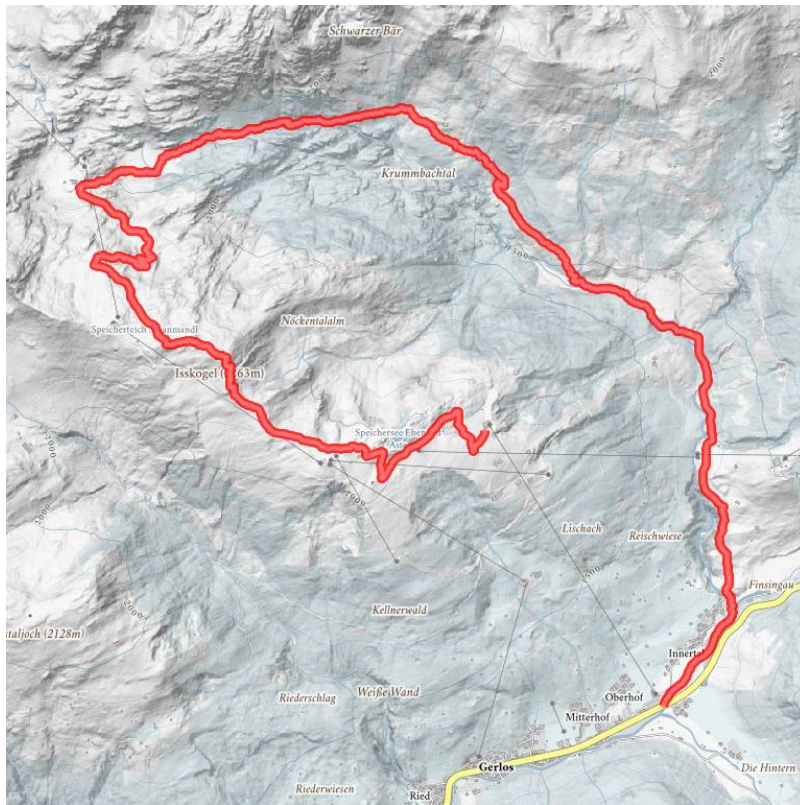


Isskogel (2.263 m) - Wilde Krimml - Krummbachtal (1.477 m)

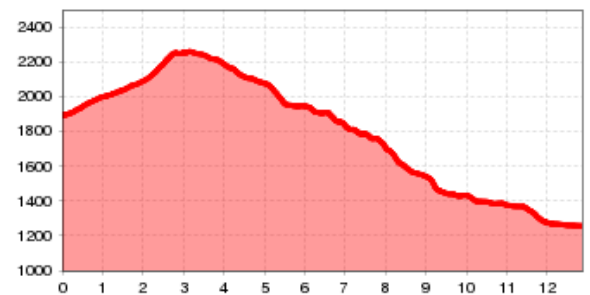
Beautiful circular hiking tour over the summit of the Isskogel, through the Krummbach valley, and back to Gerlos

total walking time	5 h	distance	13 km	difficulty	average
altitude meters uphill	364 m	altitude meters downhill	1014 m	highest point	2264 m

starting point:	top station, Isskogelbahn Gerlos (1.900 m)
destination point:	Gerlos (1.250 m)



Altitude profile



Description

You can easily reach your starting point, Arena Center (1,900 m), at the mountain station by taking the Isskogelbahn. From here, hiking trail no. 1 leads past the Latschenalm (1,950 m), via Ebenfeld, continuing across gently sloping pastures in the direction to Isskogel. The last half hour to the summit of Isskogel (2,264 m) heads a bit more steeply uphill over a green grass-topped mountain. Before you start the descent down hiking trail no. 1 to Wilde Krimmlalm enjoy the magnificent panoramic view across the impressive mountain landscape. From Wilde Krimmlalm, follow the somewhat steeper hiking trail no. 2 uphill through the romantic "Wilde Teufeltal" via the Arzlahner Alm, where you should turn right and head through a shady forest path to the snack station at Krummbachrast (1,477 m). Try the hearty alpine cheese here from our own dairy! From here, continue on path no. 2 through the valley towards Gerlos (1,250 m).

hut/alpine hut

- [Arena Center \(1.900 m\)](#) closed
- [Latschenalm \(1.950 m\)](#) closed
- [Krummbachrast \(1.480 m\)](#) Winter closed closed
- [Prölleralm \(1.475 m\)](#) closed

downloads

[GPX FILE](#)

[INTERACTIVE MAP](#)

