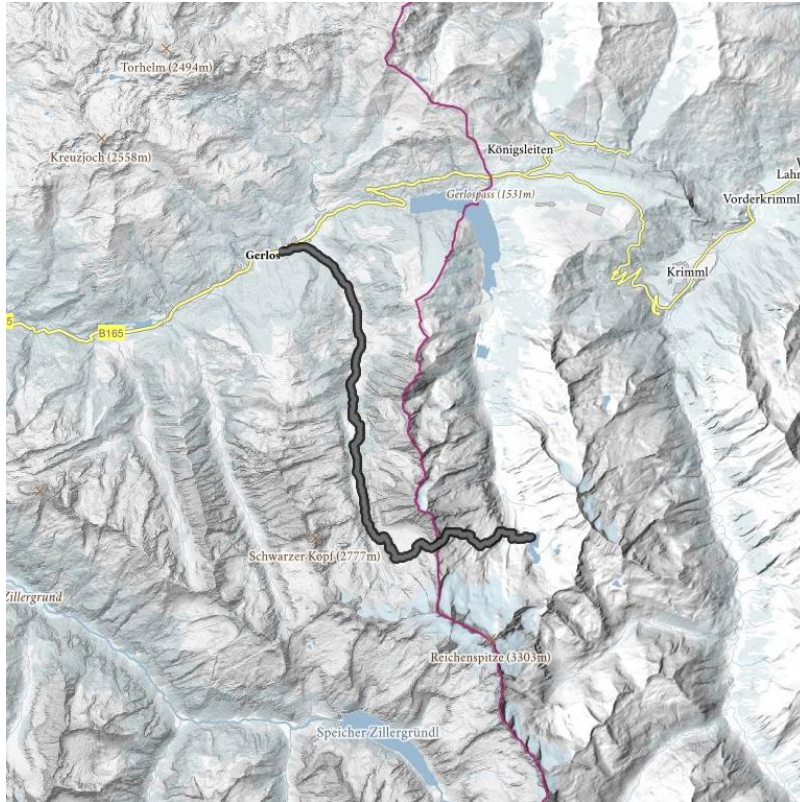


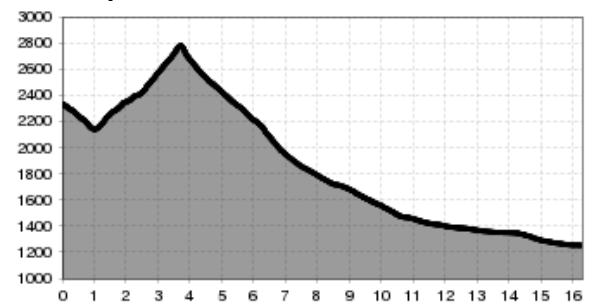
Men on a Mission Tour - day 2

Climbing heart rate!

distance	16.3 km	difficulty	difficult
altitude meters uphill	630 m	highest point	2800 m



Altitude profile



Description

The second day starts with an easy descent. After 10 minutes we turn left on the moraine (signpost) and descend about 100 metres to the glacier stream. After crossing the stream, the path leads first over grassy flanks, later over scree fields up to the col in about 2 hours. Just before the Keeskarscharte, a rocky ledge (secured by wire rope) leads to the crossing. We take the steps steeply downhill towards a rocky head. From here we have a wonderful view of the Schönachkees with the Zillerkopf. A well-secured trail (surefootedness, no fear of heights required) leads down to the Pasteinalm and on to the Issalm. Passing the Jausenstation Lackenalm, we leave the Schönach valley and reach the village of Gerlos.

hut/alpine hut

- [Issalm \(1.460 m\)](#) closed
- [Lackenalm \(1.405 m\)](#) open
- [Jörgleralm \(1.300 m\)](#) open

downloads

- [GPX FILE](#)
- [INTERACTIVE MAP](#)

