

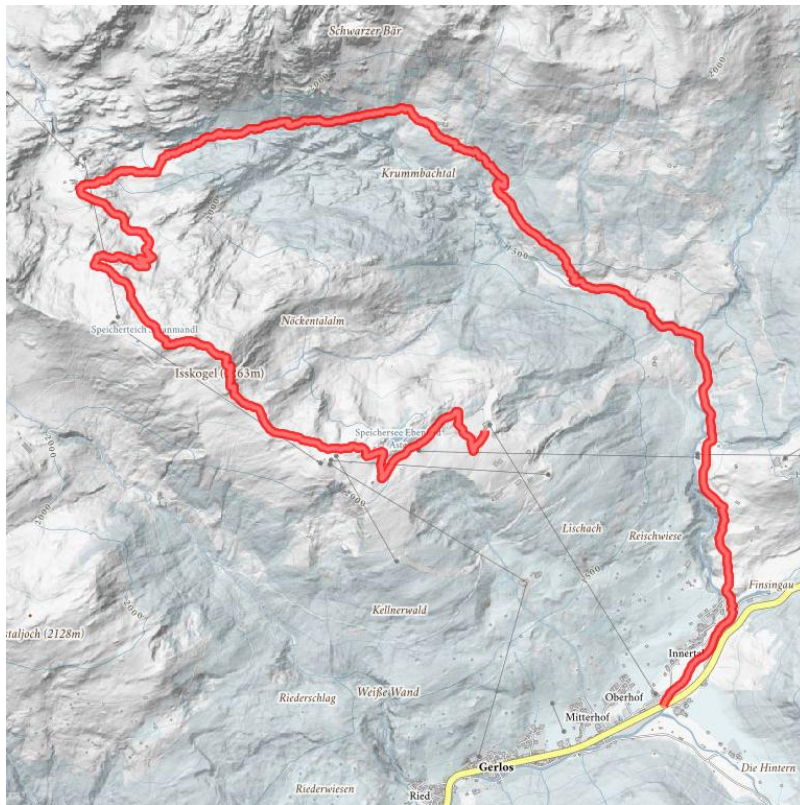
# Isskogel (2.263 m) - Wilde Krimml - Krummbachtal (1.477 m)

Beautiful circular hiking tour over the summit of the Isskogel, through the Krummbach valley, and back to Gerlos

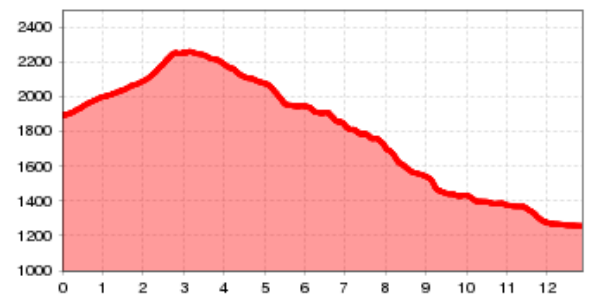
<b>total walking time</b>	5 h	<b>distance</b>	13 km	<b>difficulty</b>	average
<b>altitude meters uphill</b>	364 m	<b>altitude meters downhill</b>	1014 m	<b>highest point</b>	2264 m

**starting point:** top station, Isskogelbahn Gerlos (1.900 m)

**destination point:** Gerlos (1.250 m)



Altitude profile



## Description

You can easily reach your starting point, Arena Center (1,900 m), at the mountain station by taking the Isskogelbahn. From here, hiking trail no. 1 leads past the Latschenalm (1,950 m), via Ebenfeld, continuing across gently sloping pastures in the direction to Isskogel. The last half hour to the summit of Isskogel (2,264 m) heads a bit more steeply uphill over a green grass-topped mountain. Before you start the descent down hiking trail no. 1 to Wilde Krimmlalm enjoy the magnificent panoramic view across the impressive mountain landscape. From Wilde Krimmlalm, follow the somewhat steeper hiking trail no. 2 uphill through the romantic "Wilde Teufeltal" via the Arzlahner Alm, where you should turn right and head through a shady forest path to the snack station at Krummbachrast (1,477 m). Try the hearty alpine cheese here from our own dairy! From here, continue on path no. 2 through the valley towards Gerlos (1,250 m).

## hut/alpine hut

- [Arena Center \(1.900 m\)](#) open
- [Latschenalm \(1.950 m\)](#) open
- [Krummbachrast \(1.480 m\)](#) Winter closed closed
- [Prölleralm \(1.475 m\)](#) open

## downloads

[GPX FILE](#)

[INTERACTIVE MAP](#)

